



Electrolux

Prostore 500 1 Door Digital Freezer, 470lt (-15/-22 °C) - R290

ITEM # _____
MODEL # _____
NAME # _____
SIS # _____
AIA # _____



Prostore 500

1 Door Digital Freezer, 470lt (-15/-22 °C) - R290

691315 (PS04FIFHC)

1-door prostore freezer
470lt, 0+10°C, AISI 304, R290

Short Form Specification

Item No.

Full door freezer constructed in 304 AISI stainless steel with external bottom panel in anti-corrosive material. Large digital display featuring cabinet temperature display and setting and turbo frost cycle (to rapidly cool warm loads). HACCP-compliant control with alarms and history. Frost Watch Control to defrost only when required with automatic evaporation of defrost water. Optimized airflow provides even temperature distribution on all grids. Fitted with 65 mm-thick polyurethane insulating foam. Self-closing, on-site reversible door features microswitch to switch off the fan when the door is opened and heated door frame. Hidden evaporator to guarantee higher storage capacity and less corrosion problems. Built-in refrigeration unit; ventilated operation; Interior LED light. For ambient temperatures up to 43 °C. CFC and HCFC free. R290 highly ecological refrigerant type, cyclopentane gas in foam. Supplied with 5 x 520X442mm Rilsan coated grids and n. 5 sets of 2 stainless steel grid runners. Prearranged to fit RS485 port to facilitate connection to a remote computer and integrated HACCP systems.

Main Features

- Large digital white-digit display with cabinet temperature display and setting and turbo frost cycle (to rapidly cool warm loads).
- Fully compliant HACCP digital control: when temperature exceeds critical limits, acoustic and visual alarms are activated. Up to two months of event are kept in memory.
- Large storage area suitable to contain 520x442 mm grids or shelves to improve net capacity.
- Optimized airflow within the chamber guarantees uniformity of temperature on all grids.
- Frost Watch Control: fully automatic defrost starts only when ice is actually building-up in the evaporator.
- CFC and HCFC free (highly ecological refrigerant type: R290, - ecological gas in foam: cyclopentane).
- Hidden evaporator thus guaranteeing higher storage capacity and less corrosion problems.
- Greater storage space: internal structure with numerous charging positions available to host grids, ensuring higher net capacity.
- Adjustable temperature range from -15°C to -22°C.
- Insulation thickness: 65 mm of polyurethane injected with ecological foaming gas cyclopentane to ensure effective insulation with minimum energy consumption (thermal conductivity: 0,020 W/m*K).
- Removable triple-chamber balloon magnetic gasket to improve insulation and reduce energy consumption and ease of cleaning
- Optical door microswitch to stop the fan once the door is opened, thus minimizing energy waste.
- Model requires only 1 phase 230V/50Hz supply and can be plugged straight into an existing power socket.
- Interior LED light to save energy and for best internal visibility.
- Prearranged to fit RS485 port to facilitate connection to a remote computer and integrated HACCP systems.
- Complies with main international certification bodies and is CE marked.
- High resistance foot pedal included.
- Self closing and on site reversible left/right doors.
- Prearranged for remote alarm.
- Low noise level.
- IPX5 frontal water protection.
- ECA listed.

APPROVAL: _____



Electrolux

Prostore 500
1 Door Digital Freezer, 470lt (-15/-22 °C) - R290



Electrolux

Prostore 500
1 Door Digital Freezer, 470lt
(-15/-22 °C) - R290

- Tropicalized unit (43°C ambient temperature).
- This appliance is intended for use in ambient temperatures up to 40°C.



Prostore 500
1 Door Digital Freezer, 470lt (-15/-22 °C) - R290

The company reserves the right to make modifications to the products without prior notice. All information correct at time of printing.

2016.07.13



Electrolux

Prostore 500 1 Door Digital Freezer, 470lt (-15/-22 °C) - R290

Construction

- tainless steel AISI 304 external panels (galvanized external back).
- Inner cell with rounded corners, bottom pressed in only one piece.
- Stainless steel runners and supports easily disassembled.
- Internal components removable without the use of tools to facilitate cleaning operations.
- Pressed stainless steel door handle without joints gathering dust and dirt.
- Easy access to the main components for maintenance.
- Developed and produced in ISO 9001 and ISO 14001 certified factory.
- Automatic heated door frame.

Included Accessories

- 5 of Plastic coated grid (520x442) PNC 880319
- 1 of Pedal opening for cabinets PNC 880324
- 5 of Pair of runners for 470 and 720lt prostore cabinets PNC 880335

Optional Accessories

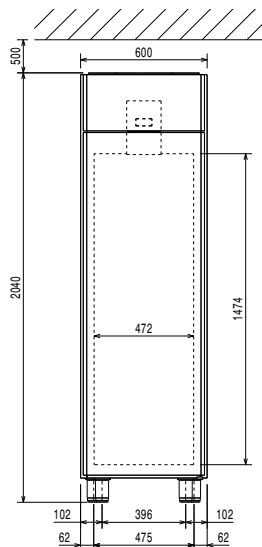
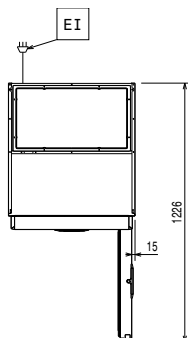
- Kit integrated HACCP for digital refrigerators (IR33) PNC 880252 ☐
- Plastic coated grid (520x442) PNC 880319 ☐
- Stainless steel grid (520x442) PNC 880321 ☐
- Pedal opening for cabinets PNC 880324 ☐
- Kit 4 feet, height 200mm PNC 880325 ☐
- Kit of 4 feet-h=67 (marine) PNC 880326 ☐
- Kit pair of runners (marine) PNC 880327 ☐
- Base frame for 1/1 GN rack for 470lt prostore PNC 880328 ☐
- Pair of runners for 470 and 720lt prostore cabinets PNC 880335 ☐
- Printer for HACCP basic version refrigerator PNC 881457 ☐



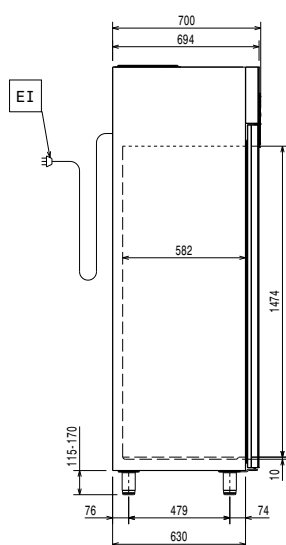
Prostore 500
1 Door Digital Freezer, 470lt (-15/-22 °C) - R290

The company reserves the right to make modifications to the products without prior notice. All information correct at time of printing.

2016.07.13

Front

Top


EI = Electrical connection
 RI = Refrigerant Inlet
 RO = Refrigerant Outlet

Side

Electric

Supply voltage:
 691315 (PS04FIFHC) 230 V/1N ph/50 Hz
 Electrical power, max: 0.414 kW

Key Information

Gross capacity 470 lt
 Net Volume: 316 lt
 Door hinges: Right Side
 External dimensions, Height 2040 mm
 External dimensions, Width 600 mm
 External dimensions, Depth 700 mm
 External dimensions, Depth with Doors Open: 1226 mm
 Number and type of doors: 1 Full
 Internal Dimensions (depth): 582 mm
 Internal Dimensions (height): 1474 mm
 Internal Dimensions (width): 472 mm
 Noise level: 55 dBA
 Height adjustment: 15/40 mm
 Number and type of grids (included): 5 - 520x442
 Type of external material: 304 AISI
 Type of internal material: 304 AISI
 Number of positions & pitch: 44; 22 mm

Refrigeration Data

Control type: Digital
 Compressor power: 3/4 hp
 Refrigerant type: R290
 Refrigeration power: 527 W
 Refrigeration power at evaporation temperature: -30 °C
 Refrigerant weight: 145 g
 Operating temperature min.: -22 °C
 Operating temperature max.: -15 °C
 Operating mode: Ventilated
 Cooling unit: Built-In
 Defrost type: Electric

Product Information (EU Regulation 2015/1094)

Energy Class: D
 Yearly energy consumption: 1836kWh/year
 Climate class: Heavy Duty (5)
 Energy Efficiency Index (EEI): 60,60

EU energy labelling from 1st July 2016

The European energy labelling scheme for professional refrigerators and freezers is based on requirements setting Minimum Energy Performance standards for commercial refrigeration cabinets sold within the EU. These requirements are designed to drive energy efficiency and environmentally friendly approach for professionals. The European energy labelling scheme will apply to all manufacturers and importers who sell and market products within the EU and it is mandatory across Europe.

Important: all products which consume energy above the minimum level will not be able to be sold within the EU from 1 July 2016.

